

EXTERIOR OF A BUNGALOW



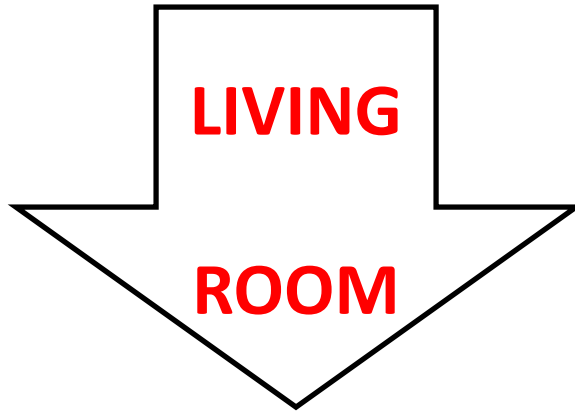
VOID DECK AREA

FRONT ENTRANCE

INTERIOR OF A BUNGALOW



STAIRWAY TO THE HOUSE



FRONT HALLWAY TO TWO COMMON BEDROOMS FROM LIVING ROOM



PICTURES OF COMMON BEDROOM ON THE NEXT PAGE

INTERIOR OF A BUNGALOW

COMMON BEDROOMS



BEDROOM 1



BEDROOM 2

**BACK HALLWAY OF
COMMON BEDROOMS
FROM COMMON
BATHROOM**



ALL BEDROOMS ARE FURNISHED WITH 4/5-DOOR WARDROBE

INTERIOR OF A BUNGALOW

COMMON BATHROOM



STORAGE
AREA
NEXT TO
COMMON
BATHROOM

INTERIOR OF A BUNGALOW

MASTER BEDROOM / BATHROOM



SMALL
AREA/ROOM
NEXT TO MASTER
BEDROOM



COMMUNE IS NEXT TO
THE GLASS DOOR



INTERIOR OF A BUNGALOW



DINING ROOM



KITCHEN



**RE-MODELED KITCHEN WITH
MICROWAVE, GAS STOVE/OVEN,
FRIDGE, DISHWASHER & BOX
FREEZER**

AMAH QUARTERS



**AMAH QUARTERS
2 OTHER ROOMS
MAYBE USED AS
STORAGE;
DEHUMIDIFIER WILL
BE PROVIDED**

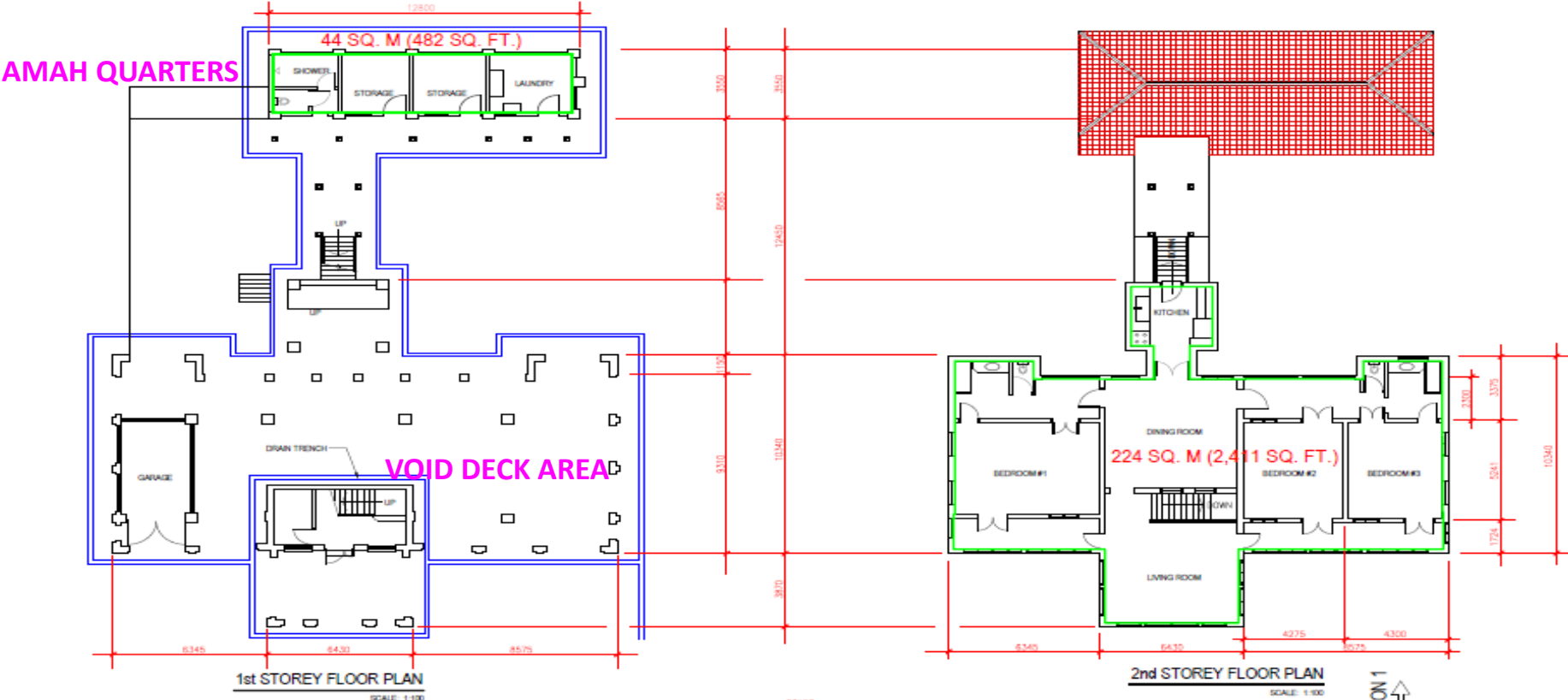


**BACK STAIRWAY TO
AMAH QUARTERS**



**LAUNDRY ROOM
WASHER & DRYER
PROVIDED**

FLOOR PLAN OF STD BUNGALOW



IF SHEET IS LESS THAN 558mm X 863mm IT IS A REDUCED PRINT SCALE REDUCED ACCORDINGLY